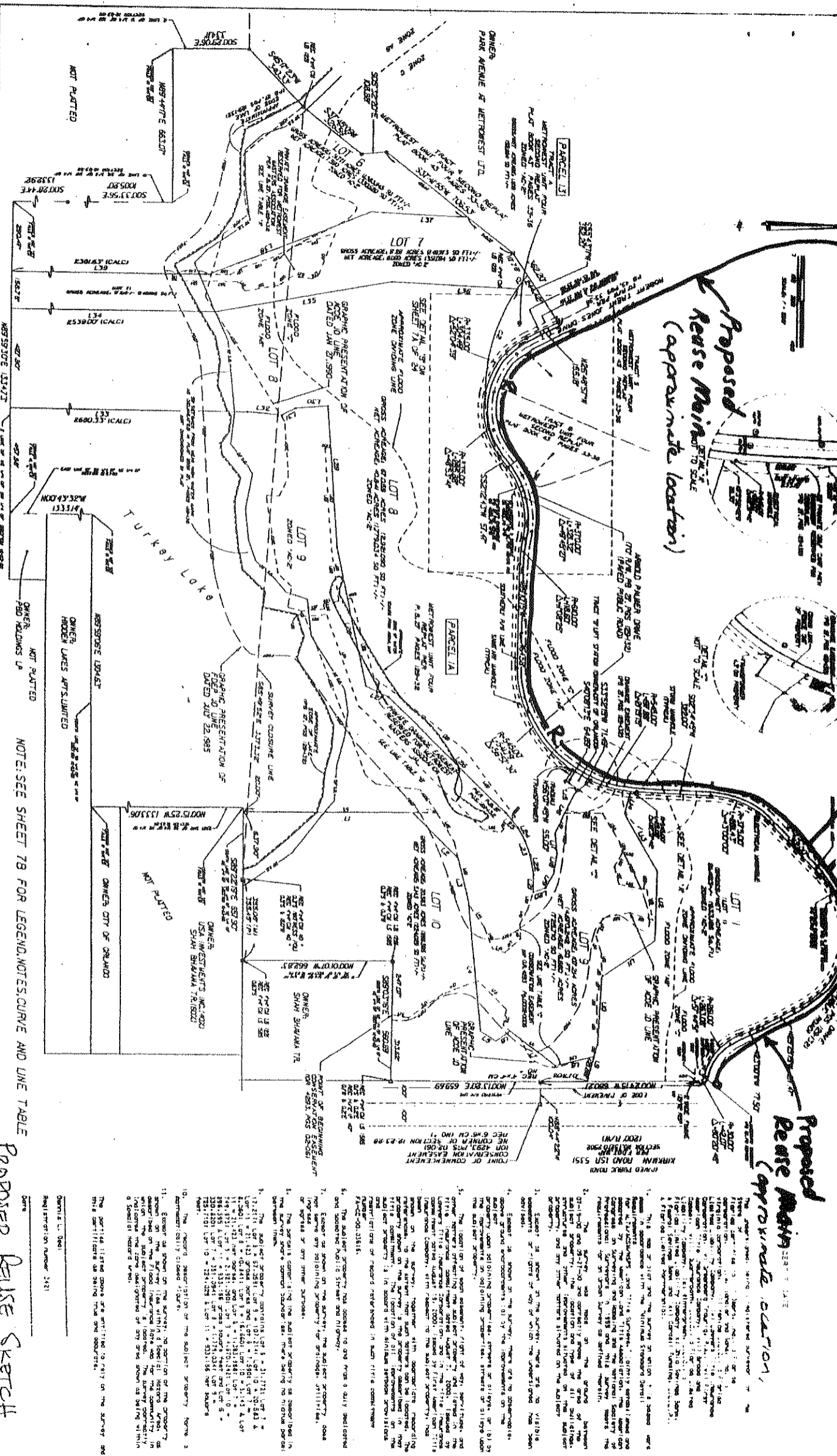


McIntosh Blvd.

NOTE: SEE SHEET 78 FOR LEGEND, NOTES, CURVE AND LINE TABLE



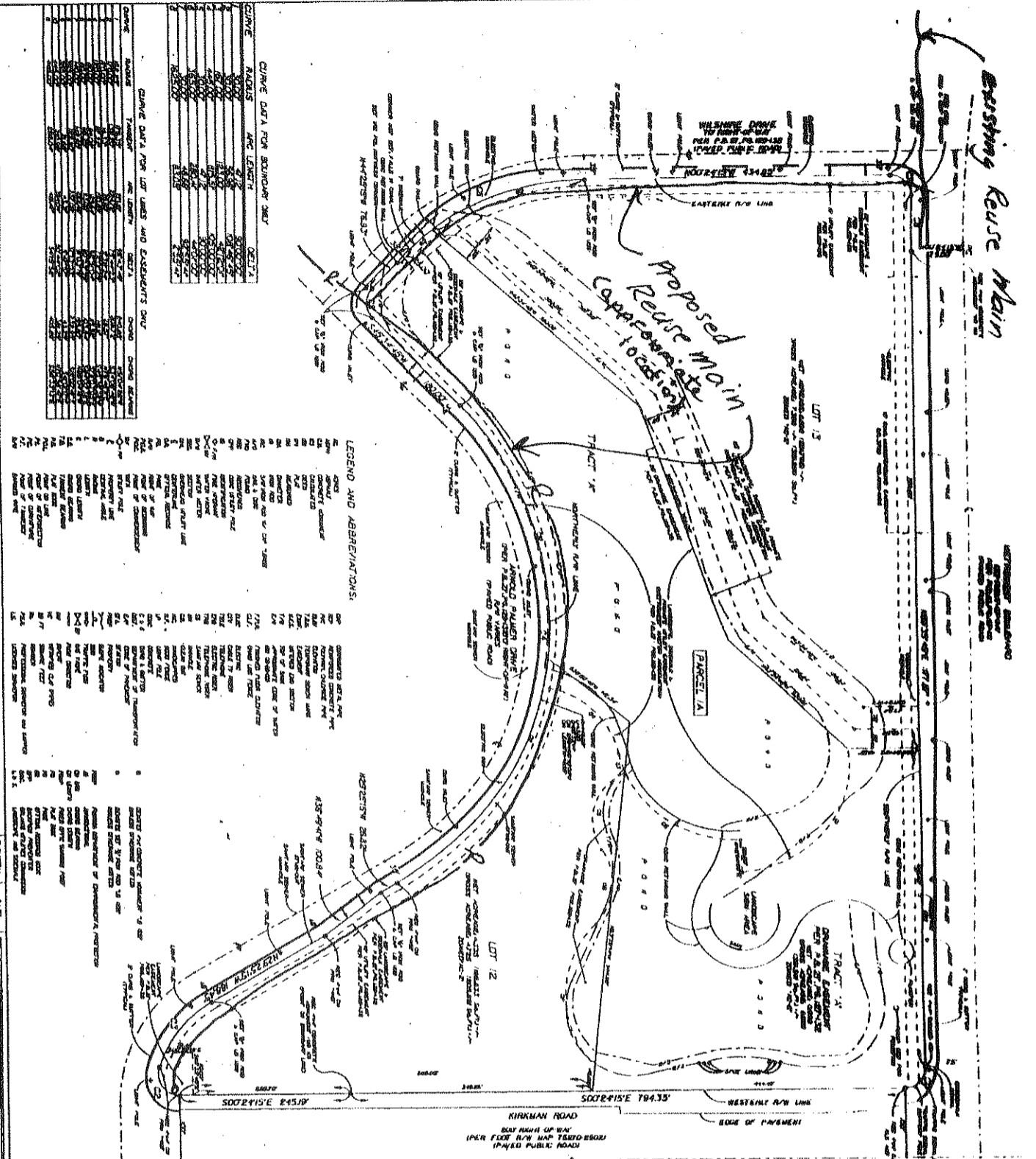
DATE: 10/11/00 07:27:45 AM

NO.	DATE	REVISIONS
1	10/11/00	ISSUED FOR PERMIT
2	10/11/00	REVISION
3	10/11/00	REVISION
4	10/11/00	REVISION
5	10/11/00	REVISION
6	10/11/00	REVISION
7	10/11/00	REVISION
8	10/11/00	REVISION
9	10/11/00	REVISION
10	10/11/00	REVISION
11	10/11/00	REVISION
12	10/11/00	REVISION
13	10/11/00	REVISION
14	10/11/00	REVISION
15	10/11/00	REVISION
16	10/11/00	REVISION
17	10/11/00	REVISION
18	10/11/00	REVISION
19	10/11/00	REVISION
20	10/11/00	REVISION
21	10/11/00	REVISION
22	10/11/00	REVISION
23	10/11/00	REVISION
24	10/11/00	REVISION
25	10/11/00	REVISION
26	10/11/00	REVISION
27	10/11/00	REVISION
28	10/11/00	REVISION
29	10/11/00	REVISION
30	10/11/00	REVISION

NOTE: SEE SHEET 78 FOR LEGEND, NOTES, CURVE AND LINE TABLE

Proposed Reuse Station Sketch

ORANGE COUNTY, FLORIDA
 PLAT OF
 ALTA / ACSM LAND TITLE SURVEY
 PARCELS 14 - LOTS 6 & THROUGH 11, METROWEST
 UNIT FOUR REPLAT PER P. 9, 27, 30S, 28-32
 PARCELS 15 - 19, 21, A, METROWEST
 UNIT FOUR SECOND REPLAT PER
 P. 9, 25, 30S, 32-35



CHANGE DATA FOR LOT LINES AND EASEMENTS ONLY

DATE	BY	REVISION	DESCRIPTION
10/11/00	JWS	1	INITIAL PLAN

LEGEND AND ABBREVIATIONS

SP	CONVEYED SETBACK	SP	CONVEYED SETBACK
AC	ADJACENT PROPERTY	SP	CONVEYED SETBACK
AS	ADJACENT STREET	SP	CONVEYED SETBACK
AS	ADJACENT STREET	SP	CONVEYED SETBACK

REVISIONS

DATE	BY	REVISION	DESCRIPTION
10/11/00	JWS	1	INITIAL PLAN

TITLE COMMITMENT NOTES

1. THE PROPERTY IS SUBJECT TO THE FOLLOWING INTERESTS:

1. A 50% INTEREST IN TRACT 12, 13 AND 14, PARCELS A, B, C AND D, AS SHOWN ON THE PLAT OF ALTALACSW LAND TITLE SURVEY, FILED FOR RECORD IN PUBLIC RECORDS BOOK 1581, PAGE 12.
2. A 50% INTEREST IN TRACT 12, 13 AND 14, PARCELS A, B, C AND D, AS SHOWN ON THE PLAT OF ALTALACSW LAND TITLE SURVEY, FILED FOR RECORD IN PUBLIC RECORDS BOOK 1581, PAGE 12.

PLAT OF ALTALACSW LAND TITLE SURVEY

PARCELS A, B, C AND D

PLAT OF ALTALACSW LAND TITLE SURVEY

FILED FOR RECORD IN PUBLIC RECORDS BOOK 1581, PAGE 12.

EXHIBIT 'D' - PAGE 2 OF 2

THE PROPERTY IS SUBJECT TO THE FOLLOWING INTERESTS:

1. A 50% INTEREST IN TRACT 12, 13 AND 14, PARCELS A, B, C AND D, AS SHOWN ON THE PLAT OF ALTALACSW LAND TITLE SURVEY, FILED FOR RECORD IN PUBLIC RECORDS BOOK 1581, PAGE 12.
2. A 50% INTEREST IN TRACT 12, 13 AND 14, PARCELS A, B, C AND D, AS SHOWN ON THE PLAT OF ALTALACSW LAND TITLE SURVEY, FILED FOR RECORD IN PUBLIC RECORDS BOOK 1581, PAGE 12.